

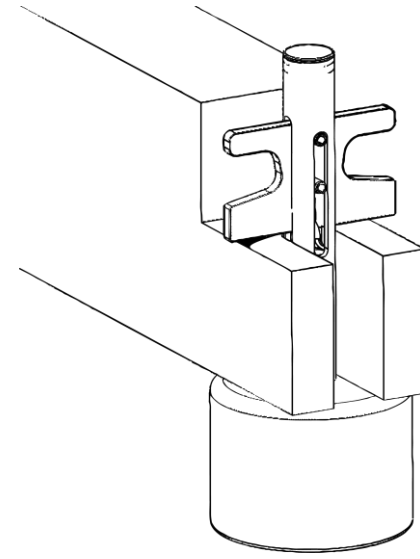
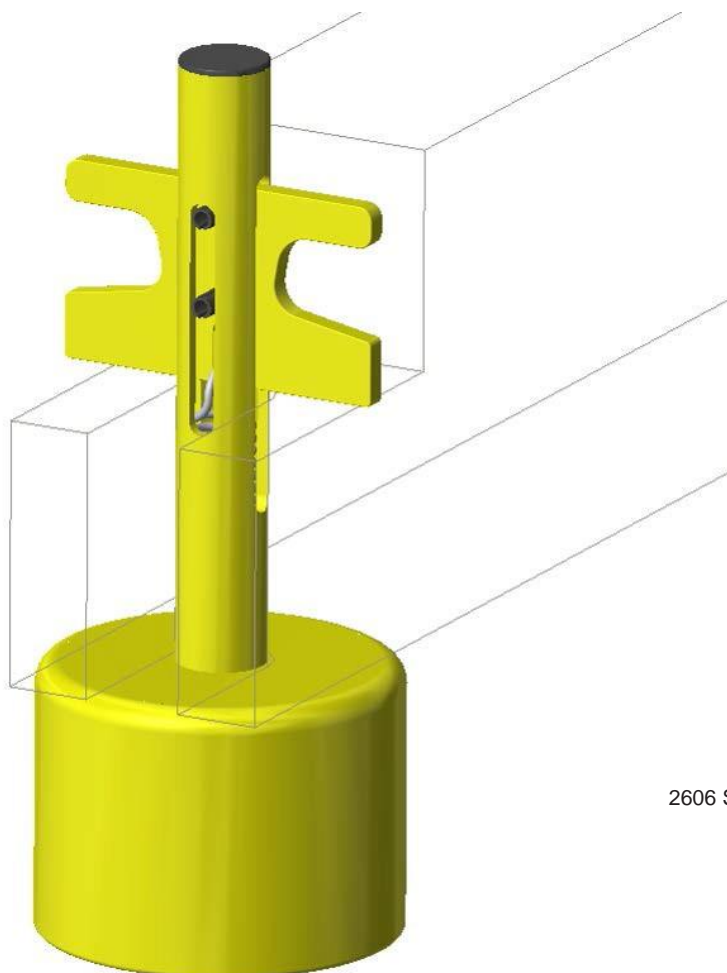
IMPORTANT SAFETY INSTRUCTIONS

WARNING READ AND UNDERSTAND ALL INSTRUCTIONS. Failure to follow all instructions listed below, may result in serious injury or death, and stamping tooling damage.

SAVE THESE INSTRUCTIONS.

1. **SAVE THESE INSTRUCTIONS - THIS MANUAL CONTAINS IMPORTANT SAFETY AND OPERATING INSTRUCTIONS FOR Die Storage Blocks**
2. **Must be 18 or over to use this product.**
3. **CAUTION - TO REDUCE THE RISK OF INJURY REMOVE BEFORE FLIPPING DIES,**
Before flipping dies/stamping tooling, make sure to remove Safety Die Storage Blocks. Otherwise they may fall of during the rotation and could cause injury or damage.
4. **REMOVE BEFORE TRANSPORTING TOOLING ON TRUCKING**
Remove Die Storage Blocks before strapping down to truck for transportation.
5. **AVOID CRUSING.**
Always be mindful of where feet/hands or other extremities are during moving or setting down die/tooling.
6. **DO NOT STACK MULTIPLE HIGH.**
It is not recommended to stack dies/tooling multiple high.
7. **ALWAYS CHECK PLACEMENT BEFORE SETTING.**
Always check to make sure Die Storage Blocks are properly seated before setting down tooling.
8. **DO NOT CRUSH, DROP, OR DAMAGE**
If Die Storage Block shows sign of visible damage, discard and DO NOT USE.
9. **DO NOT DISASSEMBLE.**
Express Products will not be held responsible for damaged product.
10. **REMOVE BEFORE PRODUCTION**
Always remove Die Storage Blocks when using/running tooling. Never keep attached while placing into press or other production run equipment. **Damage to tooling will occur.**
11. **CRUSHING INJURIES & DEATH ARE ALWAYS POSSIBLE**
Always be mindful of surroundings, Nothing can prevent all crushing accidents.
12. **ALWAYS USE CAUTION WHEN OPERATING HANDLE**
Take care when releasing handle to engage Die Storage Block to tooling, pinching may occur.
13. **NEVER EXCEED LOAD LIMIT**
Never exceed the specified load limit of 30 tons each, or damage to die storage blocks, tooling/die may occur. Exceeding limit is dangerous and serious injury or death can occur.

READ AND SAVE ALL INSTRUCTIONS FOR FUTURE REFERENCE.



WARNING TO REDUCE THE RISK OF INJURY OR TOOLING DAMAGE, ALWAYS REMOVE DIE STORAGE BLOCKS FROM TOOLING BEFORE FLIPPING OR TURNING OVER. ALWAYS REMOVE DIE STORAGE BLOCKS FROM TOOLING BEFORE TRANSPORTING OR TRUCKING TOOLING.

Maintenance and Storage

Clean with non-abrasive detergent. Paint may flake or scratch with use. Lithium grease can be used on the handle and sliding pins.

WARNING ALWAYS REMOVE BEFORE TOOLING PRODUCTION. NEVER LEAVE DIE STORAGE BLOCKS ATTACHED TO DIE/TOOLING WHEN PLACING INTO PRESS OR PRODUCTION EQUIPMENT. DIE STORAGE BLOCKS MUST ALWAYS BE REMOVED BEFORE USING TOOLING!

Transport

Never under any circumstances transport a stamping die on trucking with the die storage blocks attached. Remove before trucking.

WARNING TO REDUCE THE RISK OF INJURY ALWAYS BE MINDFULL OF EXTREMITIES WHEN SETTING/PLACING TOOLING.

SERVICE

If your Safety Die Storage Blocks appear to have a manufacturing defect, contact us at ryan@expressproducts.com

EXPRESS PRODUCTS, INC.
2606 Sanford Ave SW, Grandville, MI U.S.A. 49418

Designed by Express Products, Inc.
Professionally Made in the USA
Patented & Patents Pending USA & International